

Customer :

customer

Customer part :

customer part

Comment :

Comment

S1=3.08

S2=4.48

Tmax=468

Tp S2=507.0

PI=0.41

HI=85

Sample =1768.30

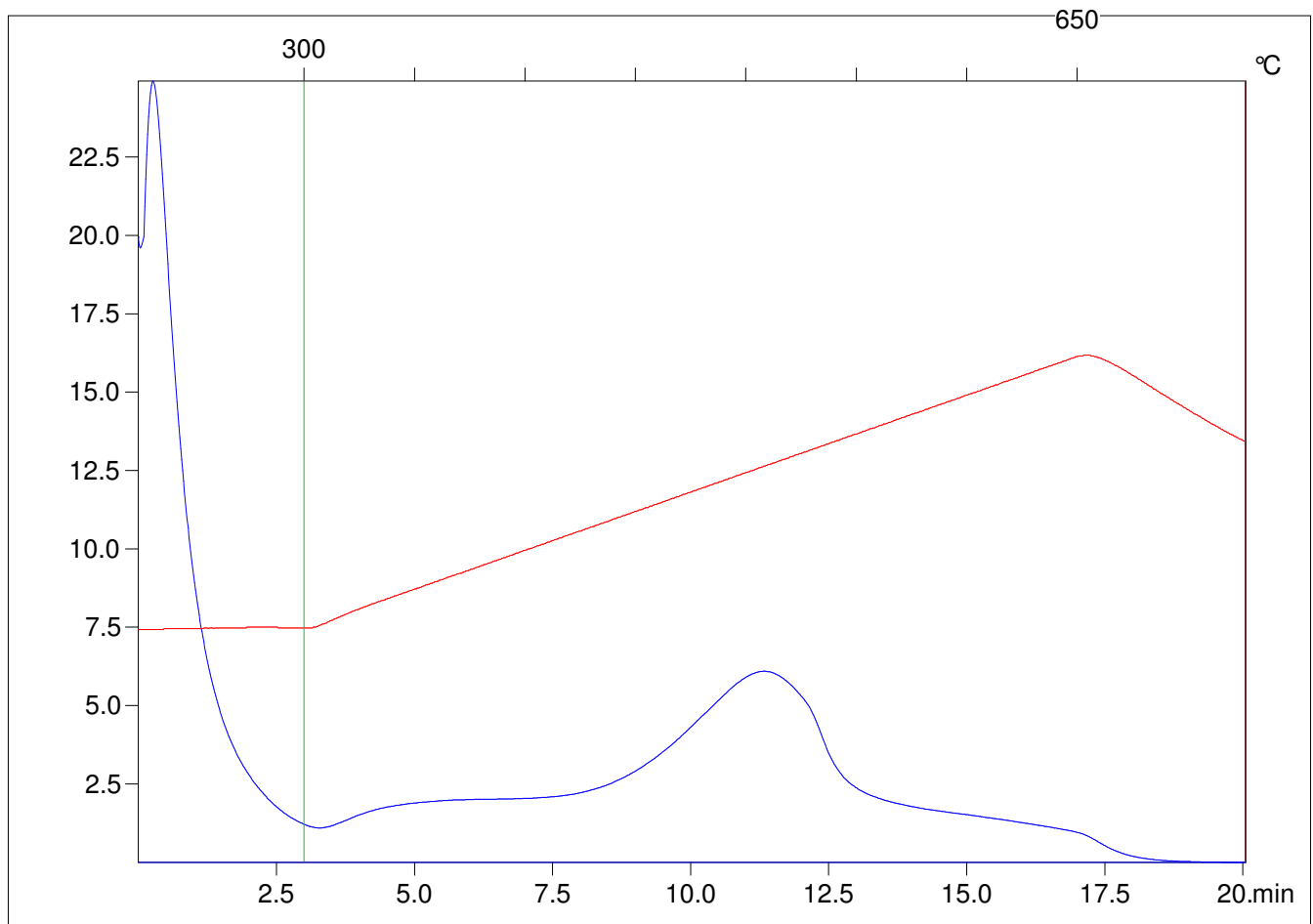
Method =Bulk Rock

Cycle=Basic

KFID(10*9)=1444

Qty =70.8

TOC=5.25



C:\VINC\PK3_1792\PK039.R00 : FID pyrolysis graphic

State

Pyro Status

Oxi Status